

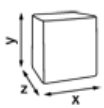
# Katrin Inclusive System Toilet Dispenser With Core Catcher - White

90144

- Holds two Katrin System toilet rolls
- Seamless dispensing with drop-down roll system and adjustable roll brake
- Easy and quick to refill
- Can be refilled while the second roll is in use, so tissue is always available
- 1360 - 1836 sheets, depending on paper quality
- Two versions available: with or without core catcher
- Better paper accessibility at the front of the dispenser opening
- The lock can be used with or without a key
- No searching around inside the dispenser opening for the loose end of the paper roll
- Main raw materials of major plastic parts and lock: ABS (Acrylonitrile butadiene styrene), PC (polycarbonate), POM (polyoxymethylene)
- Katrin Inclusive Dispensers are quality checked by Bureau Veritas for performance, durability, Hazardous substances, Workmanship, Controlled production



## Product / Consumer pack



x 154 mm

y 402 mm

z 174 mm

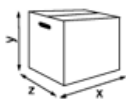


White



0.912 kg

## Transport pack



x 410 mm

y 185 mm

z 157 mm



1

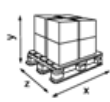


1.132 kg



6414300090144

## Transport pallet



x 800 mm

y 1260 mm

z 1200 mm



72

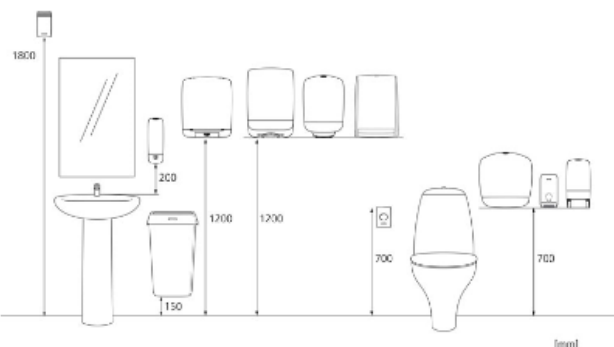


106.654 kg



6414300090151

## Measurements and installing



**Related products**

103424  
**Katrin Classic  
System Toilet 800  
ECO**



156005  
**Katrin Classic  
System toilet 800**



156007  
**Katrin Classic  
System toilet 800  
Low Pallet**



156104  
**Katrin Classic  
System toilet yellow**



156159  
**Katrin Basic System  
toilet**



156050  
**Katrin Plus System  
toilet 680**



968  
**Katrin Plus system  
toilet 3**



156052  
**Katrin Plus System  
toilet 680 Low  
Pallet**